

CONTENTS

Preface ix

To the Student x

PART 1 Automotive Service and Shop Work 1

CHAPTER 1 Introduction to the Automobile	2
Regulating the Automobile	Future Power Plants and Electric Vehicles
CHAPTER 2 Your Job in Automotive Service	22
Opportunities in Automotive Service	Automotive Technician Certification
CHAPTER 3 Shop Work and Service Information	28
Finding and Using Automotive Service Information	Identifying a Recalled Vehicle
CHAPTER 4 Automotive Shop Safety	38
Shop Safety Rules	Hazardous Material and Hazardous Waste
CHAPTER 5 Measuring Systems and Measuring Tools	48
Linear, Pressure, and Vacuum Measurements	
CHAPTER 6 Automotive Fasteners, Gaskets, and Sealants	58
Prevailing-Torque Fasteners and Torque-to-Yield Bolts	Gaskets, Seals, Sealants, and Thread-Locking Chemicals
CHAPTER 7 Shop Hand Tools	70
Striking, Turning, Gripping, and Cutting Tools	Torque Wrench and Torque-Angle Gauge
CHAPTER 8 Shop Equipment and Power Tools	84
Electric, Pneumatic, and Hydraulic Tools	

PART 2 Automotive Engines 94

CHAPTER 9 Fundamentals of Engine Operation	96
Combustion and Actions in the Engine Cylinder	
CHAPTER 10 Electricity and Electronic Engine Controls	103
Electricity, Magnetism, and Ohm's Law	Electronics and Semiconductor Devices, Microprocessor, Memory, and Electronic Engine Control
CHAPTER 11 Piston-Engine Operation	113
Basic Engine Construction and Operation	
CHAPTER 12 Engine Types and Classifications	125
Cylinder Numbering and Firing Order	Two-Stroke-Cycle and Four-Stroke-Cycle Engines, Adiabatic, Gas-Turbine, and Wankel Engines
CHAPTER 13 Engine Construction	138
Cylinder Blocks, Cylinder Heads, and Manifolds	Crankshaft, Bearings, Rods, Pistons, and Rings

CHAPTER 14 Valves and Valve Trains 159

Driving and Timing the Camshaft Valves, Valve Seats, and Valve-Train Components Valve Timing and Variable Valve Timing

CHAPTER 15 Engine Measurements and Performance 125

Engine Mechanical and Performance Measurements Compression Ratio and Volumetric Efficiency

PART 3 Automotive Engine Systems 184

CHAPTER 16 Automotive Engine Fuels 186

Fuels, Combustion, Abnormal Combustion, and Detonation Alcohol, Alcohol-Blend, and Other Fuels

CHAPTER 17 Engine Fuel and Exhaust Systems 195

Air Intake and Mixture Distribution Exhaust System and Electronic Noise Control

CHAPTER 18 Superchargers and Turbochargers 210

Supercharger and Turbocharger Construction and Operation Supercharger and Turbocharger Diagnosis and Service

CHAPTER 19 Electronic Fuel-Injection Systems 224

Air-Fuel Ratio and Stoichiometric Ratio Injectors, Sensors, and Actuators in Port and TBI Systems

CHAPTER 20 Fuel-Injected Fuel Systems: Diagnosis and Service 241

On-Board Diagnostics and Retrieving Trouble Codes Sensor and ECM Diagnosis and Testing Cleaning Injectors and Servicing Fuel-Injection Systems

CHAPTER 21 Carburetors 261

Single-, Multiple-Barrel, and Variable-Venturi Carburetors Electronically Controlled Feedback Carburetors

CHAPTER 22 Carbureted Fuel Systems: Diagnosis and Service 278

Testing Mixture-Control Solenoid Carburetor Adjustments and Service

CHAPTER 23 Diesel Fuel-Injection Systems 290

Diesel Fuel, Fuel-Injection Pumps, and Governors Diesel Injection Nozzles and Electronic Controls

CHAPTER 24 Engine Lubricating Systems 303

Engine Oil, Lubricating Systems, and Indicators Lubricating-System Trouble Diagnosis and Service

CHAPTER 25 Engine Cooling Systems 315

Antifreeze and Cooling-System Components Drive Belts, Electric Fans, and Indicators

CHAPTER 26 Cooling-System Service 328

Cooling-System Diagnosis, Testing, and Service

PART 4 Automotive Electrical and Electronic Equipment 338

CHAPTER 27 Automotive Electric and Electronic Systems 340

Electrical-Circuit Components, Symbols, and Wiring Diagrams Basic Electrical Diagnosis, Tests, and Measurements

CHAPTER 28 Automotive Battery: Construction and Service 354

Battery Construction, Operation, Maintenance, and Service Battery Testing, Diagnosis, Charging, and Replacement

CHAPTER 29 Starting System: Operation and Service 362

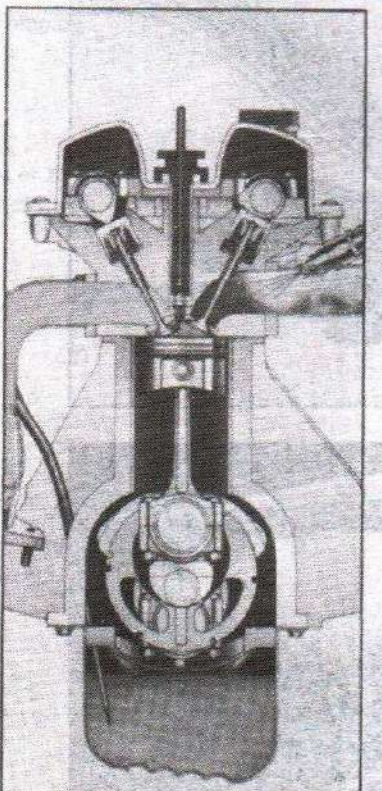
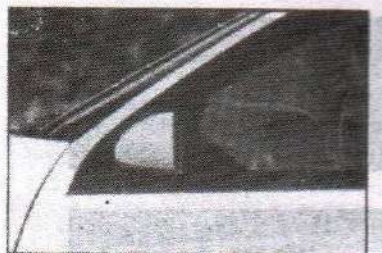
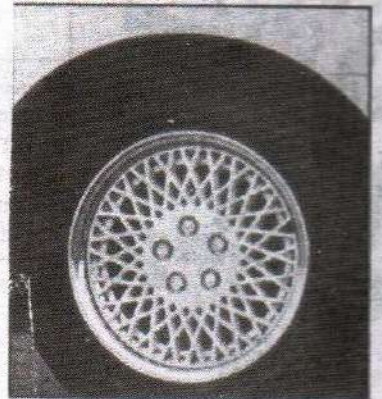
Permanent-Magnet and Electromagnet Starting Motors Starting-System Trouble Diagnosis, Testing, and Service

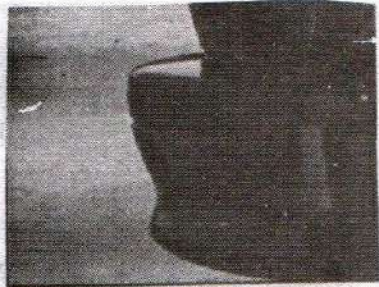
CHAPTER 30 Charging System: Operation and Service 375

Alternators and Regulators Charging-System Trouble Diagnosis, Testing, and Service

CHAPTER 31 Contact-Point Ignition System 387

Ignition-System Components, Timing, and Spark Advance Spark Plugs and Heat Range





CHAPTER 32 Electronic Ignition Systems 397
 Pickup Coil, Hall-Effect Switch, and Optical Distributors Direct, Multiple-Coil, and Capacitor-Discharge Ignition

CHAPTER 33 Ignition-System Diagnosis and Service 411
 Spark Test, Triggering Test, and Oscilloscope Diagnosis Trouble Codes, Component Testing, and Ignition Timing

CHAPTER 34 Lights, Safety and Signaling, and Driver Information and Control Devices 431

Fiber-Optic and Computer-Controlled Lighting Air Bags, Security Systems, Speed Control, Head-Up Display Networks and Multiplexing

PART 5 Engine Performance and Driveability 446

CHAPTER 35 Automotive Emission-Control Systems 448
 Controlling Crankcase, Evaporative, and Exhaust Emissions

CHAPTER 36 Servicing Emission-Control Systems 461
 PCV, Evaporative, Air-Injection, and EGR Systems Service Oxygen-Sensor and Catalytic-Converter Service

CHAPTER 37 Engine Test Equipment and Tuneup 471
 Exhaust-Gas Analyzer and Four-Gas Analysis Diagnostic Computer and Dynamometer

CHAPTER 38 Engine Performance and Driveability Diagnosis 484
 Driver Complaints and Engine Symptoms Engine Noises and Other Troubles

PART 6 Automotive Engine Service 496

CHAPTER 39 Engine Service: Cylinder Head and Valve Trains 498
 Adjusting OHV and OHC Valve-Train Clearance Cylinder-Head and Valve-Train Service

CHAPTER 40 Engine Service: Connecting Rods, Rod Bearings, Pistons and Piston Rings 518
 Connecting-Rod, Rod-Bearing, Piston, and Ring Service

CHAPTER 41 Engine Service: Crankshafts and Cylinder Blocks 526
 Crankshaft and Cylinder-Block Service Refinishing Cylinders and Installing Cylinder Liners

PART 7 Automotive Drive Trains 534

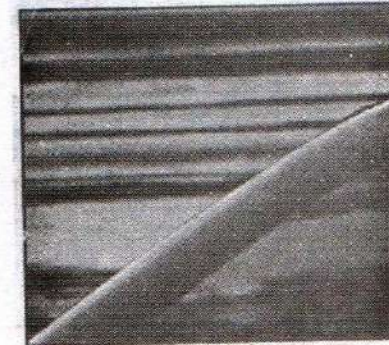
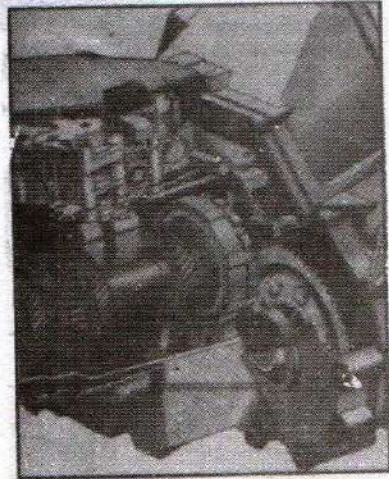
CHAPTER 42 Automotive Clutches: Operation and Service 536
 Clutch Construction, Hydraulic and Electronic Controls Clutch Noises, Diagnosis, Adjustments, and Service

CHAPTER 43 Manual Transmissions and Transaxles 553
 Gears and Gearing, Gearshifting, and Shift Linkage Transmission and Transaxle Construction and Operation

CHAPTER 44 Manual Transmissions and Transaxles: Diagnosis and Service 568
 Transmission and Transaxle Noise and Trouble Diagnosis Transmission and Transaxle Inspection and Service

CHAPTER 45 Driveshafts, Universal Joints, Differentials, and Drive Axles 584
 Drive Lines, Universal Joints, CV Joints, and Halfshafts Drive Axles, Final-Drive Gears, and Differentials Drive-Axle Diagnosis and Service

CHAPTER 46 Four-Wheel Drive, Transfer Cases, and Viscous Couplings 604
 All-Wheel Drive, Center Differential and Viscous Coupling Four-Wheel-Drive and Transfer-Case Diagnosis and Service



CHAPTER 47 Automatic Transmissions and Transaxles 620

Torque Converter and Torque-Converter Clutch Planetary Gears, Hydraulic and Electronic Shift Controls Continuously-Variable and Other Automatic Transmissions

CHAPTER 48 Automatic Transmissions and Transaxles: Diagnosis and Service 640

Fluid Checks, Noise, and Trouble-Diagnosis Procedures Stall Test, Line-Pressure Test, and Air-Pressure Test Electronic Shift-Control Diagnosis Automatic-Transmission and Transaxle Service

PART 8 Automotive Chassis 656

CHAPTER 49 Automotive Suspension Systems 658

MacPherson Struts, Ball Joints, and Torsion Bars Electronic Ride Control and Air-Suspension Systems Sonar Shock Absorbers and Active Suspension System

CHAPTER 50 Automotive Steering Systems 675

Recirculating-Ball and Rack-and-Pinion Steering Gears Electronic Power Steering and Four-Wheel Steering Wheel-Alignment Angles, Scrub Radius, and Thrust Angle

CHAPTER 51 Wheel-Alignment, Steering, and Suspension Service 691

Inspecting Ball Joints, Steering, and Suspension Components Rack-and-Pinion and MacPherson-Strut Service Four-Wheel Alignment, Steering, and Suspension Service

CHAPTER 52 Automotive Brakes 711

Drum, Disc, Parking, and Power Brakes Brake-System Valves and Master Cylinders

CHAPTER 53 Antilock Braking, Traction Control, and Brake Diagnosis and Service 729

Antilock-Braking and Traction-Control Systems Drum, Disc, Power, and ABS-Brake Diagnosis Drum- and Disc-Brake Service

CHAPTER 54 Tires and Wheels: Construction and Service 749

Tubes, Tires, and Speed Ratings Tire and Wheel Inspection, Balance, Service, and Repair

PART 9 Automotive Heating and Air Conditioning 764

CHAPTER 55 Ventilation, Heating, and Air Conditioning 766

Solar-Powered Ventilation and Rear-Window Defogger Refrigeration and Cooling with R-12 and R-134a

CHAPTER 56 Heater and Air-Conditioner Service 783

Heater and Air Conditioner Diagnosis and Service Servicing R-12 and R-134a Systems and Adding Oil

Glossary 801

Index 815

