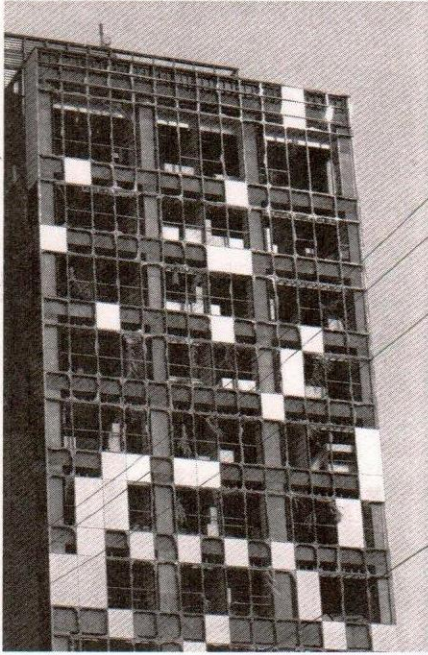
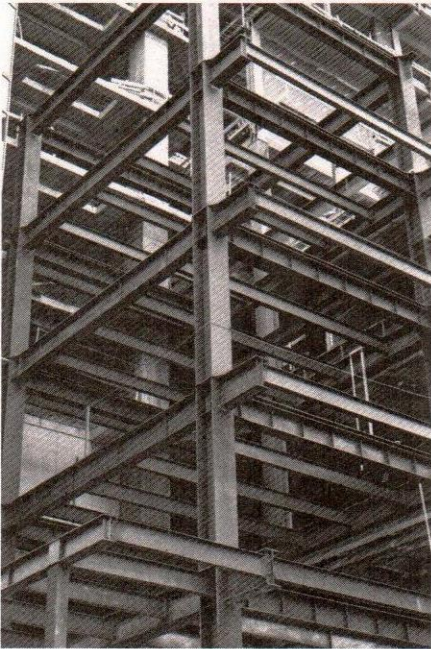


CONTENTS



1 Types of Structures and Loads 3

- 1.1 Introduction 3
- 1.2 Classification of Structures 4
- 1.3 Loads 9
- 1.4 Structural Design 28
- Problems 29
- Chapter Review 33



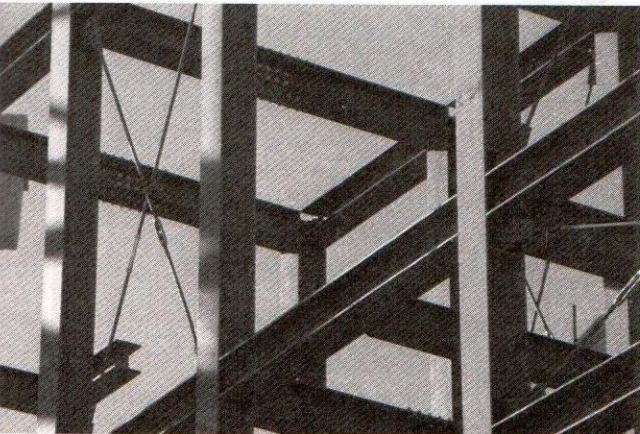
2 Analysis of Statically Determinate Structures 35

- 2.1 Idealized Structure 35
- 2.2 Load Path 48
- 2.3 Principle of Superposition 49
- 2.4 Equations of Equilibrium 50
- 2.5 Determinacy and Stability 51
- 2.6 Application of the Equations of Equilibrium 58
- Fundamental Problems 68
- Problems 70
- Project Problem 79
- Chapter Review 80



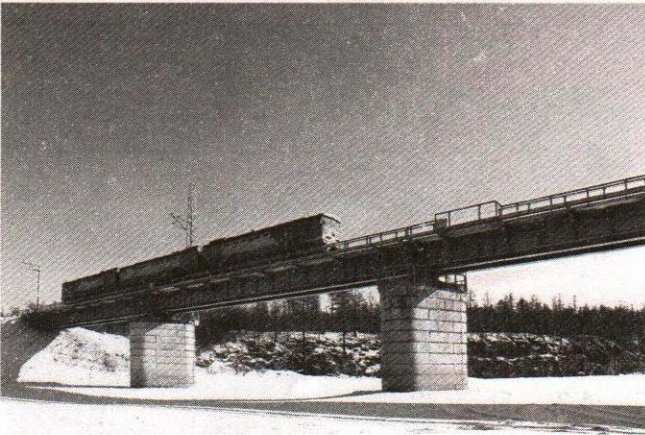
3 Analysis of Statically Determinate Trusses 83

- 3.1 Common Types of Trusses 83
- 3.2 Classification of Coplanar Trusses 89
- 3.3 The Method of Joints 96
- 3.4 Zero-Force Members 100
- 3.5 The Method of Sections 102
- 3.6 Compound Trusses 108
- 3.7 Complex Trusses 112
- 3.8 Space Trusses 116
- Fundamental Problems 123
- Problems 125
- Project Problem 135
- Chapter Review 136



4 Internal Loadings Developed in Structural Members 139

- 4.1 Internal Loadings at a Specified Point 139
- 4.2 Shear and Moment Functions 145
- 4.3 Shear and Moment Diagrams for a Beam 150
- 4.4 Shear and Moment Diagrams for a Frame 160
- 4.5 Moment Diagrams Constructed by the Method of Superposition 165
- Fundamental Problems 170
- Problems 174
- Project Problems 184
- Chapter Review 185

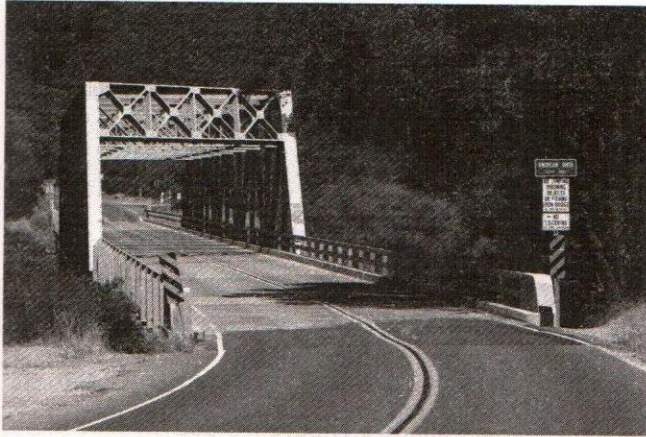


5 Cables and Arches 187

- 5.1 Cables 187
- 5.2 Cable Subjected to Concentrated Loads 188
- 5.3 Cable Subjected to a Uniform Distributed Load 190
- 5.4 Arches 196
- 5.5 Three-Hinged Arch 197
 - Problems 203
 - Chapter Review 209

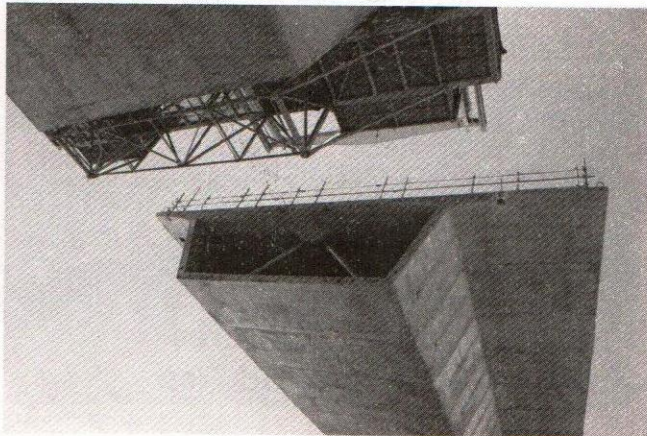
6 Influence Lines for Statically Determinate Structures 211

- 6.1 Influence Lines 211
- 6.2 Influence Lines for Beams 219
- 6.3 Qualitative Influence Lines 222
- 6.4 Influence Lines for Floor Girders 230
- 6.5 Influence Lines for Trusses 234
- 6.6 Maximum Influence at a Point due to a Series of Concentrated Loads 238
- 6.7 Absolute Maximum Shear and Moment 248
 - Fundamental Problems 253
 - Problems 254
 - Project Problems 265
 - Chapter Review 266



7 Approximate Analysis of Statically Indeterminate Structures 269

- 7.1 Use of Approximate Methods 269
- 7.2 Trusses 270
- 7.3 Vertical Loads on Building Frames 274
- 7.4 Portal Frames and Trusses 277
- 7.5 Lateral Loads on Building Frames: Portal Method 282
- 7.6 Lateral Loads on Building Frames: Cantilever Method 288
- Problems 294
- Project Problem 301
- Chapter Review 302



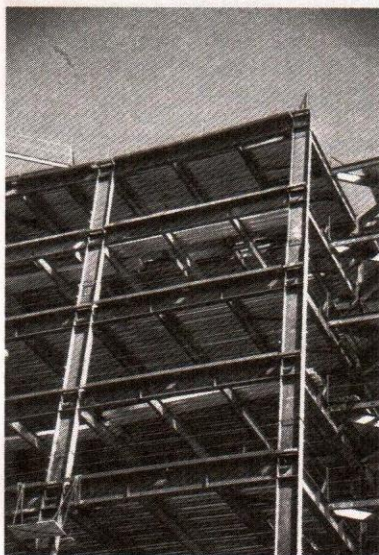
8 Deflections 305

- 8.1 Deflection Diagrams and the Elastic Curve 305
- 8.2 Elastic-Beam Theory 311
- 8.3 The Double Integration Method 313
- 8.4 Moment-Area Theorems 320
- 8.5 Conjugate-Beam Method 330
- Fundamental Problems 338
- Problems 342
- Chapter Review 346



9 Deflections Using Energy Methods 349

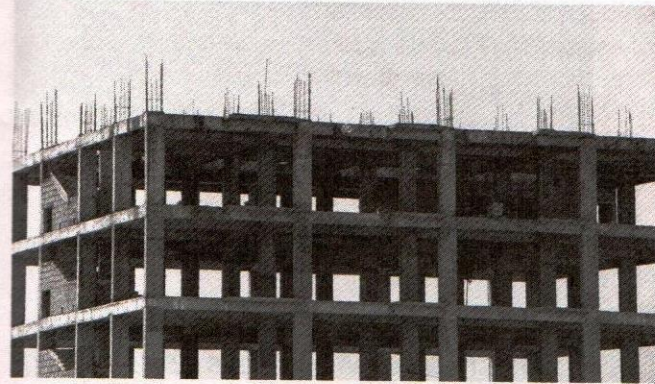
- 9.1 External Work and Strain Energy 349
 - 9.2 Principle of Work and Energy 353
 - 9.3 Principle of Virtual Work 354
 - 9.4 Method of Virtual Work: Trusses 356
 - 9.5 Castigliano's Theorem 363
 - 9.6 Castigliano's Theorem for Trusses 364
 - 9.7 Method of Virtual Work:
Beams and Frames 370
 - 9.8 Virtual Strain Energy Caused
by Axial Load, Shear, Torsion,
and Temperature 381
 - 9.9 Castigliano's Theorem for Beams
and Frames 387
- Fundamental Problems 393
- Problems 395
- Chapter Review 402



10 Analysis of Statically Indeterminate Structures by the Force Method 405

- 10.1 Statically Indeterminate Structures 405
- 10.2 Force Method of Analysis:
General Procedure 408
- 10.3 Maxwell's Theorem of Reciprocal
Displacements; Betti's Law 412
- 10.4 Force Method of Analysis: Beams 413
- 10.5 Force Method of Analysis: Frames 422

- 10.6 Force Method of Analysis: Trusses 426
- 10.7 Composite Structures 429
- 10.8 Additional Remarks on the Force Method of Analysis 432
- 10.9 Symmetric Structures 433
- 10.10 Influence Lines for Statically Indeterminate Beams 435
- 10.11 Qualitative Influence Lines for Frames 439
- Fundamental Problems 446
- Problems 447
- Chapter Review 458



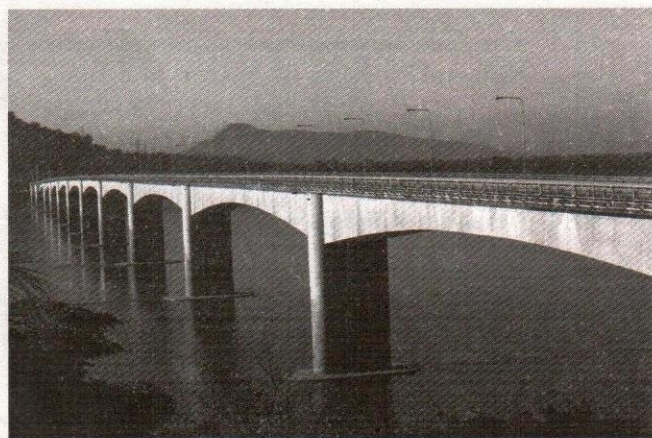
11 Displacement Method of Analysis: Slope-Deflection Equations 461

- 11.1 Displacement Method of Analysis: General Procedures 461
- 11.2 Slope-Deflection Equations 463
- 11.3 Analysis of Beams 469
- 11.4 Analysis of Frames: No Sidesway 477
- 11.5 Analysis of Frames: Sidesway 482
- Problems 490
- Project Problem 495
- Chapter Review 495



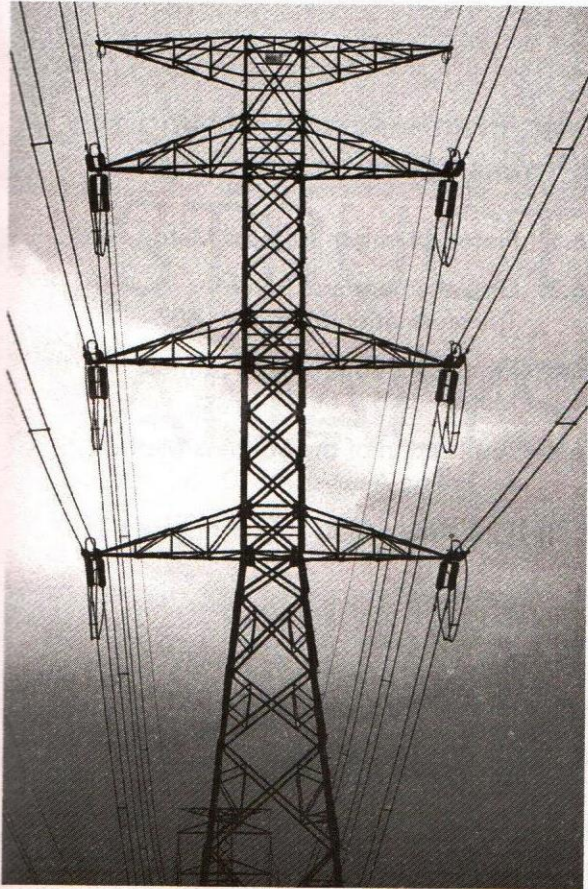
12 Displacement Method of Analysis: Moment Distribution 497

- 12.1 General Principles and Definitions 497
- 12.2 Moment Distribution for Beams 501
- 12.3 Stiffness-Factor Modifications 510
- 12.4 Moment Distribution for Frames:
No Sidesway 516
- 12.5 Moment Distribution for Frames:
Sidesway 518
- Problems 526
- Chapter Review 531



13 Beams and Frames Having Nonprismatic Members 533

- 13.1 Loading Properties of Nonprismatic
Members 533
- 13.2 Moment Distribution for Structures
Having Nonprismatic Members 538
- 13.3 Slope-Deflection Equations
for Nonprismatic Members 544
- Problems 546
- Chapter Review 547



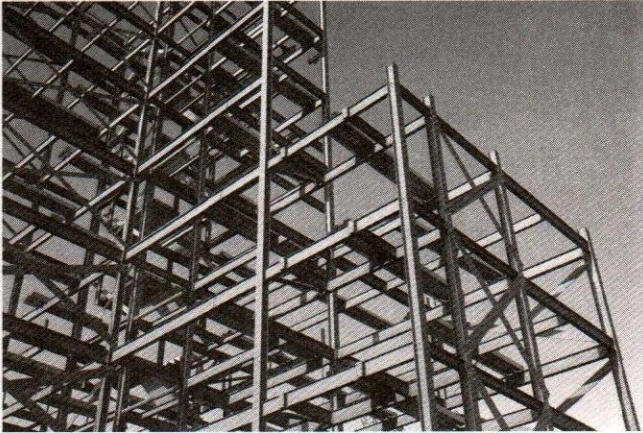
14 Truss Analysis Using the Stiffness Method 549

- 14.1 Fundamentals of the Stiffness Method 549
 - 14.2 Member Stiffness Matrix 552
 - 14.3 Displacement and Force Transformation Matrices 553
 - 14.4 Member Global Stiffness Matrix 556
 - 14.5 Truss Stiffness Matrix 557
 - 14.6 Application of the Stiffness Method for Truss Analysis 562
 - 14.7 Nodal Coordinates 570
 - 14.8 Trusses Having Thermal Changes and Fabrication Errors 574
 - 14.9 Space-Truss Analysis 580
- Problems 582
- Chapter Review 583



15 Beam Analysis Using the Stiffness Method 585

- 15.1 Preliminary Remarks 585
 - 15.2 Beam-Member Stiffness Matrix 587
 - 15.3 Beam-Structure Stiffness Matrix 589
 - 15.4 Application of the Stiffness Method for Beam Analysis 589
- Problems 602



16 Plane Frame Analysis Using the Stiffness Method 605

- 16.1 Frame-Member Stiffness Matrix 605
- 16.2 Displacement and Force Transformation Matrices 607
- 16.3 Frame-Member Global Stiffness Matrix 609
- 16.4 Application of the Stiffness Method for Frame Analysis 610
 - Problems 619

17 Structural Modeling and Computer Analysis 623

- 17.1 General Structural Modeling 623
- 17.2 Modeling a Structure and its Members 625
- 17.3 General Application of a Structural Analysis Computer Program 630
 - Computer Problems 635
 - Project Problems 637

Appendix

- A. Matrix Algebra for Structural Analysis 640

Fundamental Solutions 654

Answers to Selected Problems 676

Index 684